



ResMed **Air** Solutions

product and accessories guide

AirSense™ 10 series

AirSense 10 Elite with built-in wireless connectivity*, HumidAir heated humidifier and ClimateLineAir heated tube **37460**

AirSense 10 AutoSet™ with built-in wireless connectivity*, HumidAir heated humidifier and ClimateLineAir heated tube **37457**



AirSense™ 10 AutoSet for Her

AirSense 10 AutoSet for Her with built-in wireless connectivity*, HumidAir heated humidifier and ClimateLineAir heated tube **37458**



AirCurve™ 10 CS PaceWave™

AirCurve 10 CS PaceWave with built-in wireless connectivity*, HumidAir heated humidifier and ClimateLineAir heated tube **37459**



* Wireless communication depends on network availability.



Accessories

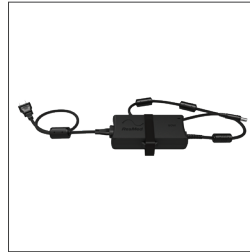


ClimateLineAir heated tube
37296

ClimateLineAir Oxy tube
37357



SlimLine™ tube
36810



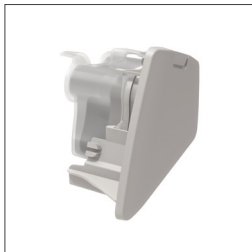
90W PSU
37347



Air outlet
37310



HumidAir heated humidifier
37300 Cleanable tub



Side cover
37335 Grey
37303 Charcoal



Travel bag
37304
Travel bag for Her
37305



SD card with protective folder
37334 (1 pk)
37332 (10 pk)
SD card reader
36931



Oximetry module*
37302
Nonin XPOD oximeter
22374
Reusable soft sensor
(medium) – 3 metre cable
70568



Filters – standard
36850 (1 pk) **36851** (2 pk)
36852 (12 pk) **36853** (50 pk)
Filters – hypoallergenic
36855 (1 pk) **36856** (2 pk)
36857 (12 pk) **36858** (50 pk)
Filter cover
19729 (AirSense 10)
19768 (AirSense 10 AutoSet
for Her)

Additional accessories

Converter

DC–DC converter **37297**

ResMed Power Station II

RPS II battery pack **24921**
DC Cable **37343**
PSU Adapter **37342**

USB module

USB module **37301**

Tubing

Standard tubing **21948**
SlimLine tubing wrap **36811**
Standard tubing wrap **33963**
Air 10 tubing elbow **37394**

Patient management

AirView™ cloud-based patient management system and ResScan™ data management software. **Contact your ResMed representative for more information.**

* Not compatible with the AirSense 10 CPAP therapy device.

Images may not be exact representations of the final products.



See ResMed.com for ResMed locations worldwide. For patent information, see ResMed.com/ip. AirCurve, AirFit, AirSense, AirView, AutoSet, ClimateLine, HumidAir, PaceWave, ResScan and SlimLine are trademarks and/or registered trademarks of the ResMed family of companies. Nonin and Xpod are trademarks of Nonin Medical Inc. and are registered in the U.S. Patent and Trademark Office. Specifications may change without notice. Product availability may vary across regions. © 2021 ResMed Ltd. 1017903/5 2021-02